

## Total Coliform Bacteria Test

### Dechlorination of Water Samples

Water samples containing chlorine (like tap water) tend to suppress the growth of coliform bacteria when used with this test. A Sterile Water Sampling Bag containing a dechlorinating agent is provided to collect the sample and neutralize any chlorine which may be present. This treatment is only necessary for water samples that may contain chlorine.

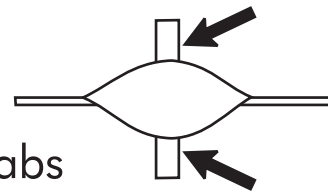
1

Tear off top of Water Sampling Bag at the scored line.



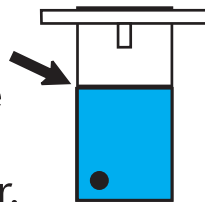
2

Pull the tabs outward to open the bag.



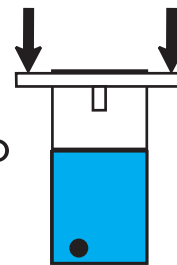
3

Fill the bag to the 100 mL fill line with the tap water.



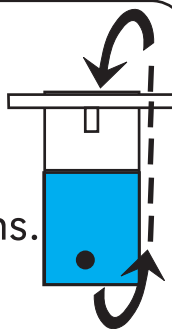
4

Pull wire ends to close the bag.



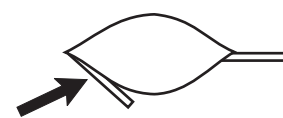
5

Hold tape wire and whirl the bag for 3 complete revolutions. Shake the bag to dissolve the tablet.



6

Unwhirl bag and pull tabs open. Fold one tape wire inward to form a pouring spout.



## Procedure

Run the test for a quick screening test to determine if coliform bacteria are present in numbers greater or less than 20 colonies/100mL of water.

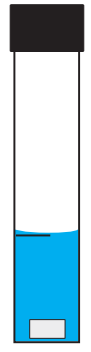
1

Fill the glass tube that contains a tablet to the 10 mL line. Replace the cap.



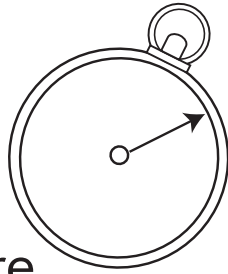
2

Stand the tube upright with the tablet flat on the bottom of the tube.



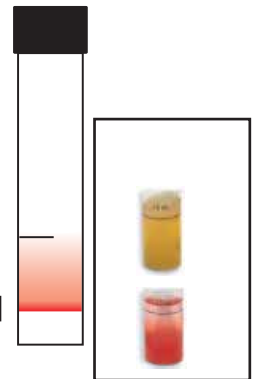
3

Incubate the tube upright at room temperature for 48 hours. Store out of direct sunlight.



4

Compare the contents of the tube to the Coliform Bacteria Color Chart.



## Coliform Test Disposal Procedure

Remove the cap and add approximately 1 mL (1/3 tsp or 20 drops) of household chlorine bleach and immediately recap. Let the tube stand upright for about 4 hours. Dispose of the closed tube in the trash. **Do not open the tube.**

WARNING! This set contains chemicals that may be harmful if misused. Read cautions on individual containers carefully. Not to be used by children except under adult supervision.

